

Initial Female Audition Entire Song/ Call Back Portia & Joy Entire Song

22

19. Stepsisters' Lament

Marcia



start **11**
JOY:



Why would a fel - low want a girl like her, a frail and fluf - fy



beau - ty? Why can't a fel - low ev - er once pre - fer a



sol - id girl like me? She's a froth - y lit - tle bub - ble



with a flim - sy kind of charm, And with ver - y lit - tle



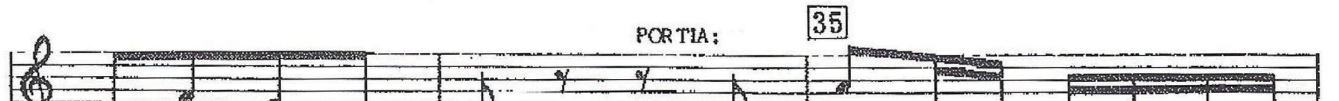
trou - ble I could break her lit - tle arm! Oh, oh,



why would a fel - low want a girl like her, So ob - vious - ly un -



u - sual? Why can't a fel - low ev - er once pre - fer a



u - sual girl like me? Her cheeks are a pret - ty shade of



pink, But not an - y pink - er than a rose is. Her


Initial Female Audition Entire Song Callback Portia & Joy Entire Song



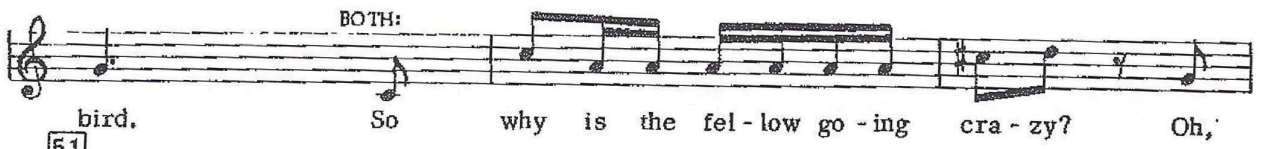
skin may be del-i-cate and soft, But not an-y soft-er than a



doe's is. Her neck is no whit-er than a swan's. She's



on-ly as dain-ty as a dai-sy. She's on-ly as grace-ful as a



bird. So why is the fel-low go-ing cra-zy? Oh,




why would a fel-low want a girl like her, a girl who's mere-ly



love-ly? Why can't a fel-low ev-er once pre-fer a



girl who's mere-ly me? What's the mat-ter with the man? What's the mat-ter with the



man? What's the mat-ter with the man?

